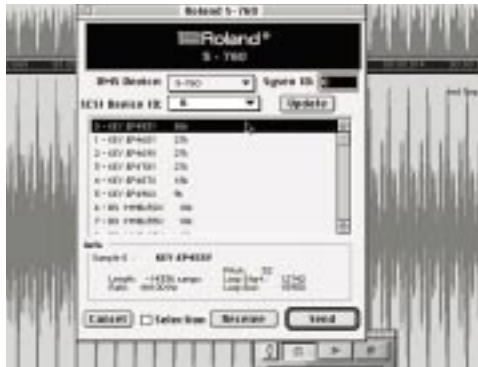


## What's New

Two new programs, *BIAs Peak* and Mark of the Unicorn's *Digital Performer*, have been added to the S-760 Digital Sampler support arsenal. These programs are for the Macintosh and the Power PC. *Peak*, for those of you unfamiliar with the program, offers non-destructive editing, audio scrubbing, third party plug-in technology and direct editing from hard disk. Of course *Performer* (MOTU) has been around a long time and now you can transfer samples from the S-760 and *Performer* and take advantage of *Digital Performer's* great DSP functions.



One cool feature is *Peak's* ability to import tracks from an audio CD through SCSI from a CD-ROM. This is great for sampling CD's. Once you import the track you can mark the regions of the imported track and have *Peak* export or save the regions as AIFF files on your Mac's hard drive. Using *Peak's* compatibility with the S-760's SCSI/MIDI transfer protocol, you can fly those exported files over to the S-760. This can quickly speed up the process of getting samples off of an audio CD without ever having to sample from it.

Of course, there are even more CD-ROM releases, several of which are being profiled in this issue of "In the Loop." Our next issue will contain a complete listing of Roland format CD-ROMs.

(Continued on Page 6)

## BOSS SP-202 Dr. Sample



Introducing BOSS's first sampler: the SP-202 / Dr. Sample. This small but powerful sampler is the least expensive digital sampler from Roland or BOSS to date and presents some new features not found on any other sampler.

Like the Roland MS-1, the SP-202 has front panel pads that trigger samples. It also has the ability to store your sounds on non-volatile media. However, the similarity stops there. As you can see in the picture, a Tap tempo button allows you to control the tempo or BPM (beats per minute) of a sample in realtime. You can then adjust the tempo precisely with the "up" and "down" cursors which are displayed on-screen. The SP-202 is also the first sampler with realtime time-stretching. No more waiting around for numbers to be crunched to get your loop to that new tempo. Just press the Time button and dial up the new tempo you want your loop to play at. It's that simple!

In addition to this bit of new rocket science, BOSS threw in some cool effects to allow drastic sample manipulation. There are two filter selections, delay doubling and a ring modulator that will add some funk to any sample.

(Continued on Page 3)

# THE BASICS

## Maximizing Your Performance

One thing you'll quickly learn about Roland samplers is that there isn't just one way to program your sounds or setups. For example, check out the Performance structure of a 700-Series sampler.

In general, a Performance is used to create a multitimbral setup and assign multiple patches to MIDI channels. While this is the most common and obvious use of a Performance, it is smart to learn the different ways a Performance can be configured.

### Standard Studio Setups

Most often you will use multiple Patches in a single Performance to create a song or musical composition. Many musicians have learned that even though there are 32 parts in a Performance, they aren't limited to just 32 Patches in the memory of the sampler. Remember, a 700-Series sampler (S-770,750, 760, SP-700, DJ-70) can hold up to 64 Performances. A simple program change can bring in a new Patch. Program changes are assigned on the Part Map area of the Performance. Here you can assign up to 128 Program changes to the Patches that are within a Volume. Remember, a Volume is a collection of Performances. To load up several Performances at once, set them all up to be part of one Volume.

It's also important to remember that you can assign Performances to Program changes. Just send your Program changes to the Control Channel (so that they won't interfere with the regular Program changes). By changing the Performance with a Program change message you can change the entire collection of sounds all at once—very helpful for live situations or when the music needs to make a drastic change in instrumentation.

### Offsets

One really handy feature on the S-760 and SP-700 is the Performance Patch offsets (attack and release time, filter cutoff and tuning). This allows you to configure your Patch differently on the Performance level rather

than in the Patch. This saves you the time of making copies of the same Patches and assigning them separately to different Performances.

## Customizing Instruments in Performances



A programmer could get up to 128 levels of velocity in a single note range

You may have already noticed that there are several instruments in the Roland sample library that take advantage of Performances in creating high quality instrument sounds. For instance, the Jazz YC7 Grand Piano on the Preview Disc provides a good example of using two patches layered on the same MIDI channel to achieve more velocity crossfades than would be available on a single Patch. Notice that each Patch is set for a specific dynamic range for the piano.

When you play softly, the first Patch is assigned to the pp (soft piano) dynamic level of the Patch. The current Patch indicator marker will come up alongside the Patch in the Performance at the left hand side of the screen. As you increase the dynamics of your playing you can see the mf (metzo-forte) Patch playing according to the key velocity. This is typical of dedicating a Performance to an individual instrument and achieving more dynamic response than most conventional samplers. By using this technique, a programmer could get up to 128 levels of velocity in a single note range if he or she used mono samples and had enough RAM and time to program it.

Notice that the Patches are being stacked and set to the same MIDI channel, and that the relative levels between the Patches are preset. Of course, you can adjust them at anytime to your own taste.

### Positional Crossfades



In the second example, we see a Performance for a brass section (BRS:Orch Ensemble on the Orchestral Volume 2 CD-ROM), where the upper and lower keyboard ranges of several Patches overlap. This is commonly referred to as "Positional Crossfading." This technique helps the sound blend more naturally between the breaks of the Patch keyboard ranges.

Of course, you can add more instruments to these to complete your arrangement. Because the levels and Positional Crossfades are programmed specifically to this Patch, it is wise to start by loading this Performance first and then add other instruments.

### Live Performances



If you are playing in live situations, Performances can be a useful area to setup multiple instruments in a split. Instead of creating Patches with specific key ranges, you can assign several Patches on the same MIDI channel and make them playable in various ranges on

your controller keyboard by assigning the Upper and Lower key ranges on the Performance level. Of course, you can offset the tuning of the Patch to make it work in a specific keyboard range.

This technique can be taken to extremes in the DJ-70MkII. For instance, I can setup one Performance as nothing but beatloops on different notes. On another Performance, I can have a bass patch, synths and vocals. A sound played in one Performance will sustain if you use the Hold button or Pedal to sustain it. Then you can change to another Performance and jam along with both the drumloop and other samples while you are sustaining the original sound. The DJ-70 and DJ-70MkII can both offset tempos and pitch on the Performance level without affecting the original Patch.

### SP-202/Dr. Sample, continued

If you don't like samples that sound too clean, you'll be overjoyed to know that you can select between three lo-fi modes to grunge up your groove, and each pad can have its own separate fidelity setting. Also onboard the SP-202 are two internal banks. If you want more sounds, then just pop in a SmartMedia™ Flash RAM card and start adding in another two banks of sounds. You can have up to 32 samples in the SP-202 at once!

Oh yeah, did I mention it can run on batteries, has a built-in microphone, the ability to mix input signals through the effects along with the samples and only costs \$395?

If you're lucky, you can check out this new DJ-oriented sampler at the Summer NAMM show in Nashville. It should be available in stores this October.



SmartMedia™ Memory Expansion Card for SP-202/Dr. Sample

# CD-ROM PROFILES

## Africa Volume II

### Roland

Available from Authorized  
Roland Dealers  
CD-ROM \$195



Following-up on the success of the first Africa Project Series CD-ROM, Roland is introducing a new CD-ROM disc featuring more African sounds. This new disc complements the first by adding a vast array of non-pitched percussion instruments such as congas, dumbeks, djembes, gudugudus, metallic percussion instruments and a wide range of "human percussion" (handclaps, footstomps, mouth clicking to mention a few).

Also on this disc are rhythmic phrases in various tempos. I am particularly addicted to the Tribal Beats. These have combinations of voices and instruments pounding away in several variations so you can create extended realistic performances. There are also Patches in various memory sizes. If you already have and/or are considering getting the first Roland Africa CD-ROM, be sure to get this one as well. These discs are designed to complement one another.

## The Ultimate Piano

### East-West Soundwarehouse

Toll-Free: 800/ 833-8339  
Fax: 310/ 858-8795  
<http://www.eastwestsound.com>

CD-ROM \$399



I've been asked quite a few times "what's the best piano in the Roland Sample Library?" In the past, I've have a tough time trying to answer. Until now. This new disc from East West offers the best and most essential pianos that I have ever heard.

I was impressed with how nice and smooth the pianos played from my old D-50 synth keyboard. The best versions of these pianos are memory intensive, but they are worth it. There are 32, 48 and 64MB sized (when using multiple units) versions of the Fazioli and Steinway D piano. Of course, you will find smaller versions as well, but as usual, memory counts.

This disc offers "four of the best pianos ever built" such as the Steinway D, Steinway C, Fazioli F228 and the Bossendorfer 225. Every key has been sampled with several dynamics both with and without the sustain pedal. Each piano type has several choices of memory size, along with versions for 61-note keyboards. The extensive liner notes can help you get an idea of which piano is best for your recording application. East-

West paid attention to the programming of this disc and real piano players will appreciate how realistic and playable these piano samples are. Many Roland sampler piano conissours will be very pleased with the *Ultimate Piano*.

## Peter Siedlaczek's Advanced Orchestra

### Best Service

Distributed by East-West  
Soundwarehouse  
Toll-Free: 800/ 833-8339  
Fax: 310/ 858-8795  
<http://www.eastwestsound.com>



CD-ROM \$995.00 each \$249 indiv.  
Audio CD \$499 set / \$119.00 each

If you are a composer who demands high quality orchestral recording and a variety of phrasing and realistic articulations, then you owe it to yourself to listen to these discs. The quality of the sounds is excellent and layout of the Volumes is intuitively created, so you can quickly and easily find the exact sound you need.

I found that many of these sounds blended with each other for incredible orchestral simulations. You will be able to create extremely realistic orchestrations with these discs.

Below is a short list of some of the instruments and sounds included on these discs.

### Volume 1. String Ensembles

Violins, Violas, Celli and Basses. Phrasings and articulations, sustained notes, con sordino, detache, glissandi, grace notes, short chords, arpeggios and runs.

### Volume 2. Solo Strings

Violin, Viola, Cello and unconventional sounds. Phrasings and articulations, sustained notes, con sordino, detache, pizzicato, tremolo, trills, glissandi, short chords, arpeggios and runs.

### Volume 3. Woodwinds

Flutes, Oboe, English Horn, Clarinet, Bassoon and Contrabassoon. Phrasing and articulations, sustained notes, grace notes, trills, crescendos, runs, mordents, turns, pickup and flutter tongue.

### Volume 4 Brass and Effects

Trumpets, Trombones, French Horns and Tuba. Phrasings and articulations, sustained notes, staccato, grace notes, trills, runs, pickup, flutter tongue along with effects and unconventional brass sounds (clusters, etc).

### Volume 5. Percussion and Harp

Cymbals, Timpani, Gran Casa, Snare Drum, Tam-Tam, Gongs, Triangles, Vibraphone, Marimba, Xylophone, Glockenspiel, Tubular Bells and Harp.

## Liquid Grooves

### Spectrasonics

Distributed by Ilio Entertainments

Toll-Free: 800-747-4546

Tel: 818-707-7222

Fax: 818-707-8552

<http://www.ilio.com>



CD-AUDIO \$99 (grooves only)  
CD-ROM \$199 (complete library)

These are grooves that have previously existed only in your imagination—fluid rhythms forged by a synthesis of propelling live drum grooves and unusual, organic percussion loops. The live

elements, performed by some of L.A.'s most creative session players, have been transformed into a unique sonic texture via ground-breaking signal processing techniques and state-of-the-art instruments.

These highly-original and versatile grooves have lots of space and are presented in a "Construction Kit" format similar to *Spectrasonic's Supreme Beats* collection. Tempo synchronization between the loop elements has been "pre-tuned" via Logic Audio for quick and easy lockup. The full-blown CD-ROM version is organized to make mixing and matching the individual elements effortless, and includes a wider selection of grooves and the killer Wavedrum™ single hits.

The liquid concept is two-fold: Sparse "hand-played" grooves that feel great, combined with a focus on uncharted sonic territory. This is an inspiring, one-of-a-kind library from producer Eric Persing.

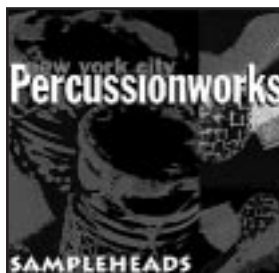
## Percussionworks

### SampleHeads

Tel: 212/ 262-3488

Fax: 212/ 262-3488

<http://www.sampleheads.com>



CD-ROM 2 disc set \$249.95  
Audio 2 disc CD \$99.95

You just walked into some of the baddest percussion samples and loops on the planet. A great deal of time and a vast amount of experience went into making this a world class percussion library. Percussionworks was originally conceived as being the musician/producer's "workhorse" for percussion sounds. It was recorded and arranged with only this purpose in mind. The amazing talent chosen for this library provided the kind of diverse content that was needed to make this "workhorse" a reality. Making great samples is all about capturing the "musician." Each artist has brought a certain style and feel to these recordings and it is all seven of these New York artists who make Percussionworks such a dynamic collection.

Most of the material recorded in Percussionworks was done with the other Sampleheads CD-ROM, *Drumworks*, to make all of these samples work together via tempos and styles.

## SAMPLER FAQs

*I've had a JS-30 for a year and I still can't figure out what the blue Scratch button does. Nothing happens when I press it. How do I make it work?*

*Mark Wright*

The Scratch button on the JS-30 is designed to let the sample assigned to a specific pad be scratched by a DJ-70 or DJ-70MkII via MIDI. You essentially control the sample through the MIDI controllers that are being sent by the DJ-70/DJ-70MkII's scratch dial. Many DJ's, particularly in Europe, use the JS-30 as an expander module.

*I have a S-760 sampler and I use it for lots of sounds. However, I want to "dirty-up" the samples for some industrial music tracks. Sometimes the sound quality is too good. Any ideas on how to "lessen" the sound quality of this sampler?*

*John Aubrey*

There are lots of tricks to use to add grunge to your samples. One is resampling samples you already have to a lower resolution. Try using the Rate Convert to change a sample to a lower rate, such as 22kHz from 44.1kHz.

One of my favorite tricks is the S-760's Bit Convert. You can actually alter a nice clean 16-bit sample to a 4-bit sample with skipped addresses. This effect can make any sample sound industrial. Give these two suggestions a try.

*Do you know where I can find Roland CD-ROMs that have wood flutes on them?*

*Steve Tedesco*

It depends. If you are looking for ethnic sounding wood flutes, I recommend the *Africa Volume 1* CD-ROM. *NorthStar's Global Instruments* (tuned) is also a good place to look for exotic wood sounds. East West Soundwarehouse also carries a good selection of exotic world music sounds.

*My friend has a large collection of Roland S-50 samples that he has made. Is it possible for me to load these samples into my DJ-70MkII?*

*Brian Mulbrey*

The S-50 disks can not be loaded directly. However, you can convert the sounds on the S-50 disks to a S-550-compatible disk which will load into the DJ-70MkII. This is done by using the S-50 system disk (SYS-505 Library Conversion disk), available through Roland Product Support, (213) 685-5141, ext. 770 or from Roland U.S.'s Web page <http://www.rolandus.com>. Once you have loaded the Patches into the DJ-70MkII, you can save them as regular DJ-70MkII files.

**What's New, continued from Page 1**

Those of you wanting to see intense S-760 sampler setups should check out the Broadway show "Jekyl and Hyde," which has 12 S-760's racked together in the orchestra pit. These are being remote-controlled 200 feet away by a mouse and a monitor. The S-760's Volumes are loaded from program change commands during the show. This is a very cool setup and possibly sets the record for "the longest distance away from your sampler" contest.

**Corrections:**

The Sampleheads Website was incorrectly listed in the last issue. It is <http://www.sampleheads.com>.

The Q Up Arts site has changed to <http://www.quparts.com>, and be sure to check out ProRec at <http://users.aol.com/prorec/prorec.html>. If you missed the last "In the Loop" you can download an Adobe PDF file from the Roland U.S. Website at <http://www.rolandus.com>.

**COMPATIBILITY GUIDE UPDATE**

These devices have been added to our overall compatibility guide. You can get the complete list online at <http://www.rolandus.com>, via America Online or CompuServe; or call Roland Product Support 213.685.5141, extension 482 and we will fax or mail it to you.

**Current Operating Systems**

S-760	2.24
S-770/750	2.25
SP-700	1.12 EEPROM
MS-1	1.12
JS-30	1.03 EEPROM
DJ-70	ES.06
DJ-70MKII	1.02

**New CD-ROM Drives**

- Plextor PX-12CSE 12x speed
- Toshiba XM-5701TA 12x speed
- Teac CD-516S 16x speed

For a complete list of compatible products for Roland digital samplers, call our Faxback service @ 213/685-5141, ext 271. Use Faxback number 21019 to have the Compatibility Guide sent to you.



Roland Corporation U.S.  
7200 Dominion Circle  
Los Angeles CA 90040